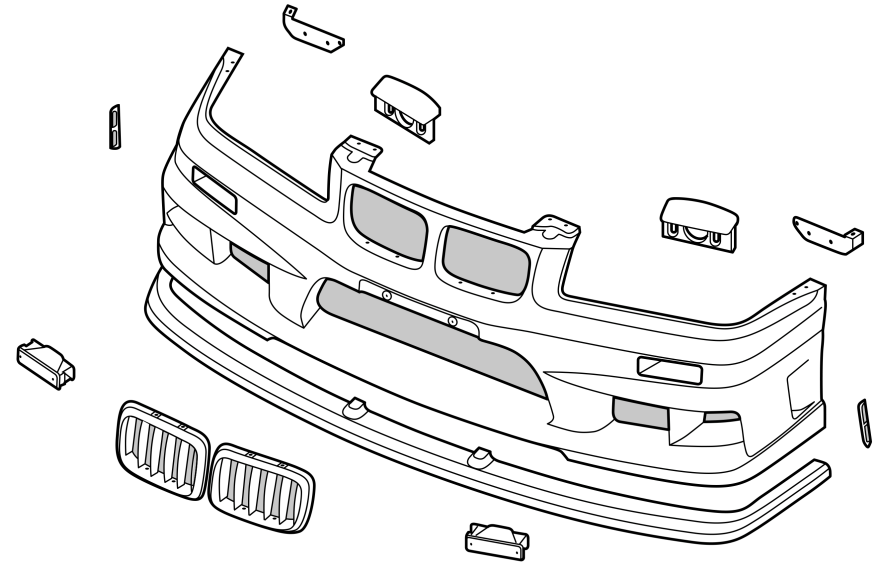


IBK-5003
IBK-5003-1

itatsi

🌐 ENG.



Front Bumper

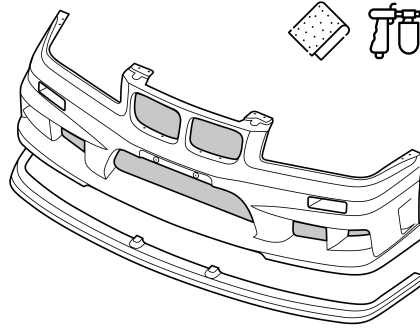
For BMW e36

+Lip,
Blinkers,
Grilles,
Brackets,
Vents.



1. Bumper+Lip Preparation and Paint

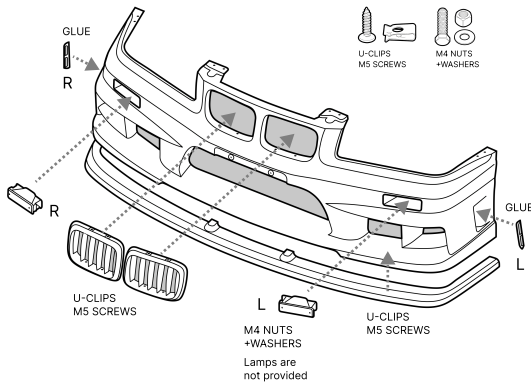
- **Part Disassembly:** Before painting, remove all separate components (grills, blinkers, etc.) from the bumper shell and front lip.
- **Test Fit:** Test fit the bumper shell (step 4-7) and lip to the vehicle to verify alignment and adjust as needed.
- **Surface Finishing:** Thoroughly prep the surfaces (sand/clean), then apply primer, paint, and clear coat according to industry standards, ensuring the parts fully cure before proceeding.



2. Component Installation

Once the bumper shell and lip are fully cured, install the accessories:

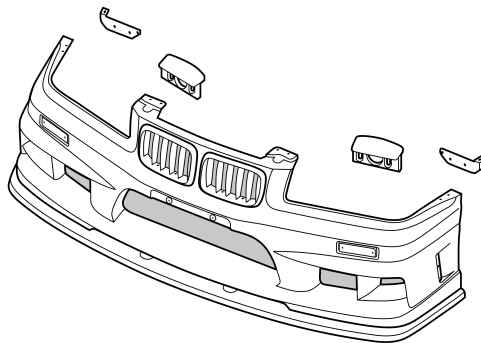
- **Turn Signals (Blinkers):** Install the lamps P21W+W5W (Remove the glass to install). Secure Blinkers using M4 nuts and washers.
- **Kidney Grills:** Insert the U-clips into the bumper shell's mounting points, then secure the grills using M5 screws (screwed through the grill into the U-clip).
- **Front Lip:** Attach the front lip to the main bumper shell by inserting U-clips into the fiberglass mounting points and securing with M5 screws.
- **Side Vent Covers:** Apply an approved automotive adhesive/glue and secure the covers over the lower side openings.



3. Pre-Installation Check

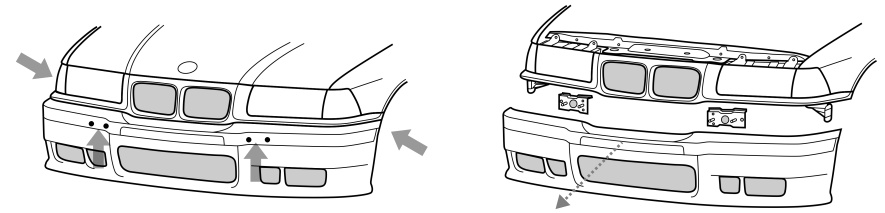
At this stage, your custom bumper assembly is complete and ready for installation. Verify that you have:

- **Assembled Bumper:** The main bumper shell with the lip, kidney grills, blinkers, and side vent covers fully installed.
- **Mounting Hardware:** The four separate mounting brackets: two custom front brackets and two custom side brackets (these will be installed onto the car in the next steps).



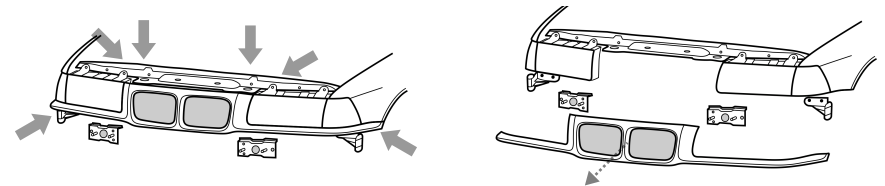
4. Remove OEM Front Bumper

Unscrew all fasteners (sides and front under the covers). Disconnect all lighting wires (fog lights). Carefully slide the old bumper off the vehicle.



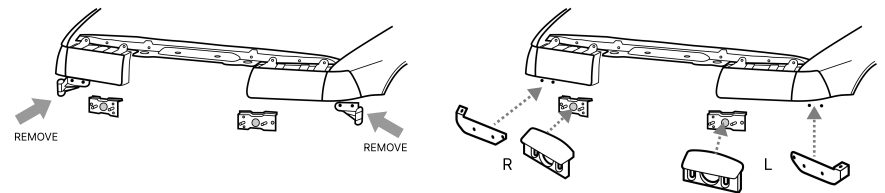
5. Remove OEM Nose Panel Grille

Remove the screws securing the panel that holds the OEM kidney grills. Lift and remove the entire nose panel to clear the mounting area.



6. Install Custom Mounting Brackets

Remove the old OEM side brackets and replace them with the provided custom side brackets. Attach the custom front brackets onto the metal bumper ends (adsorbers).



7. New Bumper Installation

Connect blinkers' wires (Turn Signals + DRLs). Carefully slide the new assembled bumper onto the installed custom brackets. Secure all mounting points (4 screws on top + 2 on both sides).

